

# **Guildford Museum and Castle**

**Design report for**

**Expression of interest for National Lottery Heritage Fund**

July 2019

# **ZMMA**

# Existing Record Plans

## **GMC/SU/02 Rev D**

Existing Level E

## **GMC/SU/03 Rev D**

Existing Level D

## **GMC/SU/04 Rev C**

Existing Level C

## **GMC/SU/05 Rev C**

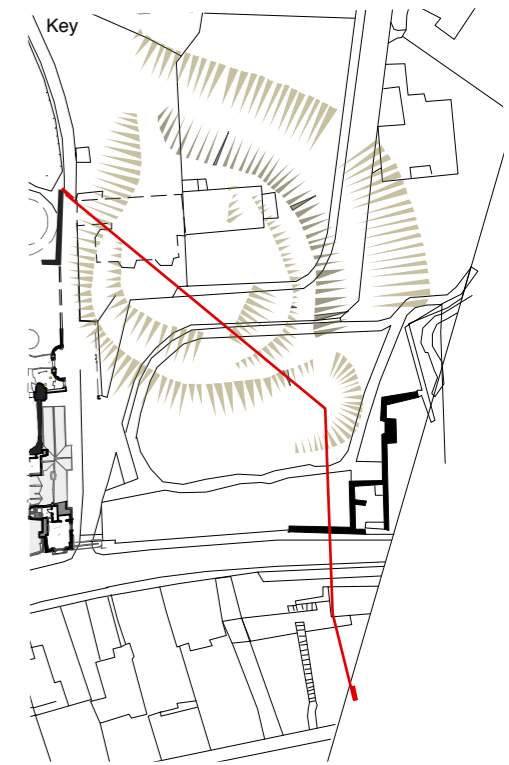
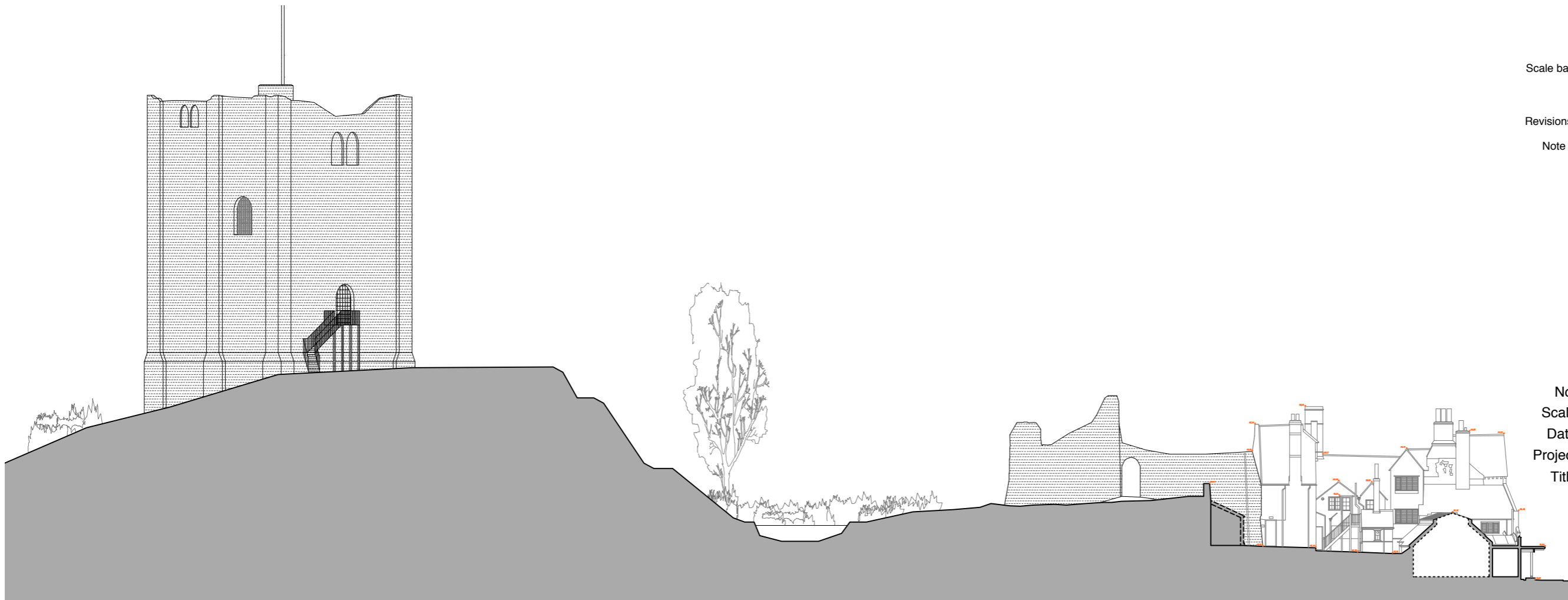
Existing Level B

## **GMC/SU/06 Rev C**

Existing Level A

## **GMC/SU/07 Rev A**

Existing Long Section



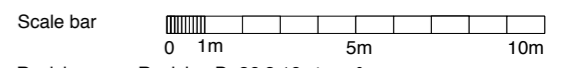
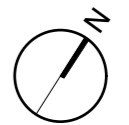
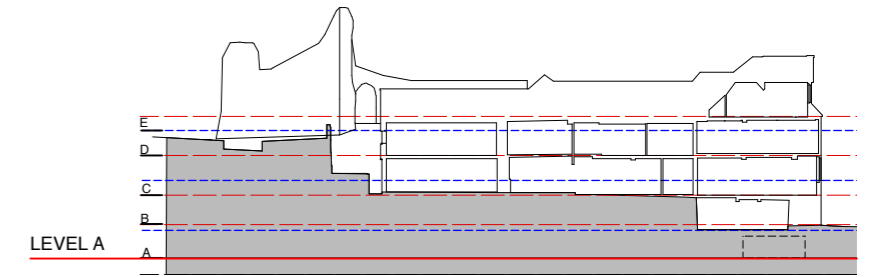
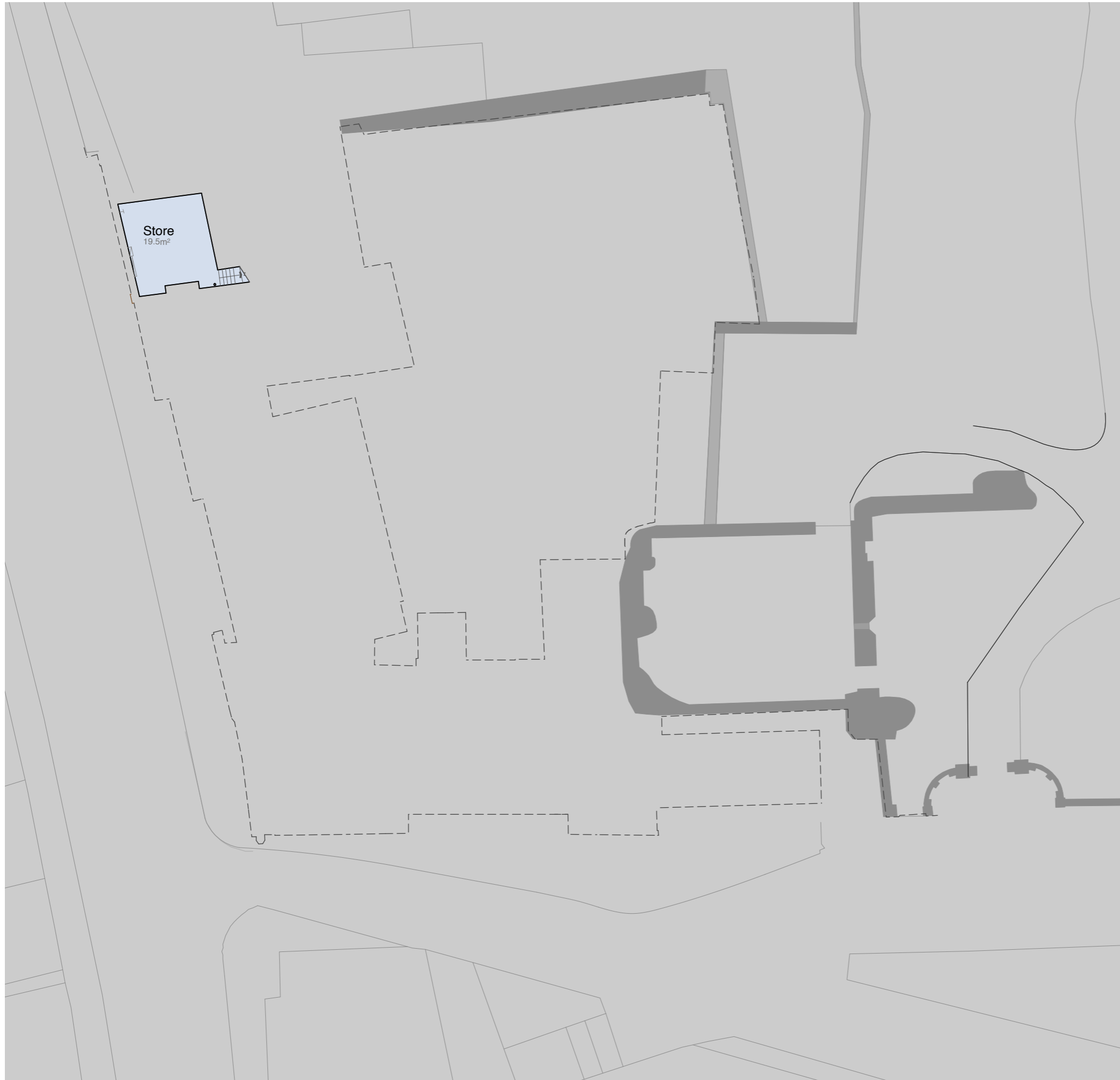
Revisions  
 Revision A: 3.10.18 Q.S  
 Revision X: 10.04.13

Note 1  
 •Do not scale from this drawing  
 •Use figured dimensions only  
 •Dimensions shown in millimetres  
 •All dimensions given to finished surfaces  
 •Not to be used as fabrication drawings  
 •Allow for minimum working tolerances  
 •Verify all dimensions on site  
 •Inform Architect of any discrepancies  
 •Refer to Specification/Finishes Schedule  
 •Allow for all making good consequent upon the works

**For Information**

No. **GMC/SU/07 Rev A**  
 Scale 1:350 @ A3  
 Date 01/13  
 Project Guildford Museum and Castle  
 Title Existing Long Section

**ZMMA**  
 25b Underwood Street  
 London N1 7LG  
 T +44 (0)20 7251 8888  
 F +44 (0)20 7251 8080  
 E info@zmma.com



Revisions  
 Revision D: 26.3.19 stage 2  
 Revision B: 03.12.18 consultant team  
 Revision A: 03.10.18 Q.S.  
 Revision X 10.04.13

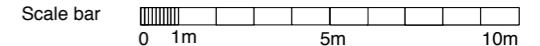
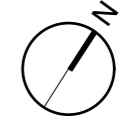
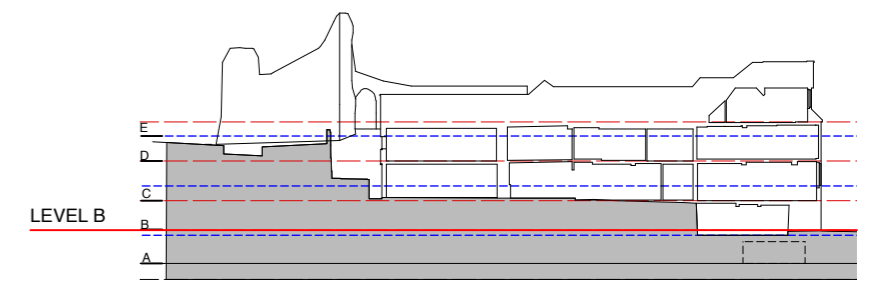
Note 1  
 •Do not scale from this drawing  
 •Use figured dimensions only  
 •Dimensions shown in millimetres  
 •All dimensions given to finished surfaces  
 •Not to be used as fabrication drawings  
 •Allow for minimum working tolerances  
 •Verify all dimensions on site  
 •Inform Architect of any discrepancies  
 •Refer to Specification/Finishes Schedule  
 •Allow for all making good consequent upon the works

### For Information

No. **GMC/SU/06 Rev C**  
 Scale 1:200 @ A3  
 Date 01/13  
 Project Guildford Museum and Castle  
 Title Existing level A



25b Underwood Street  
 London N1 7LG  
 T +44 (0)20 7251 8888  
 F +44 (0)20 7251 8080  
 E info@zmma.com



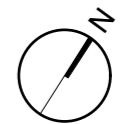
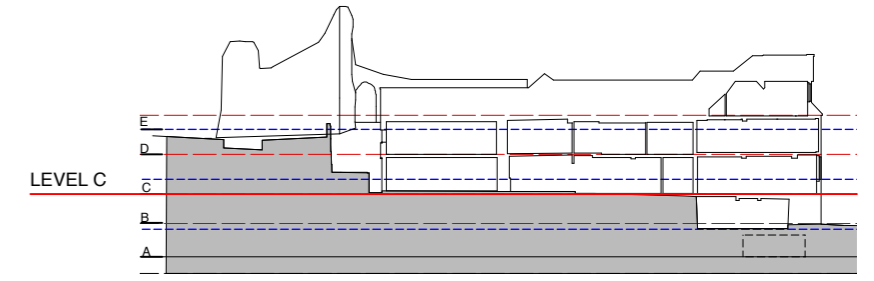
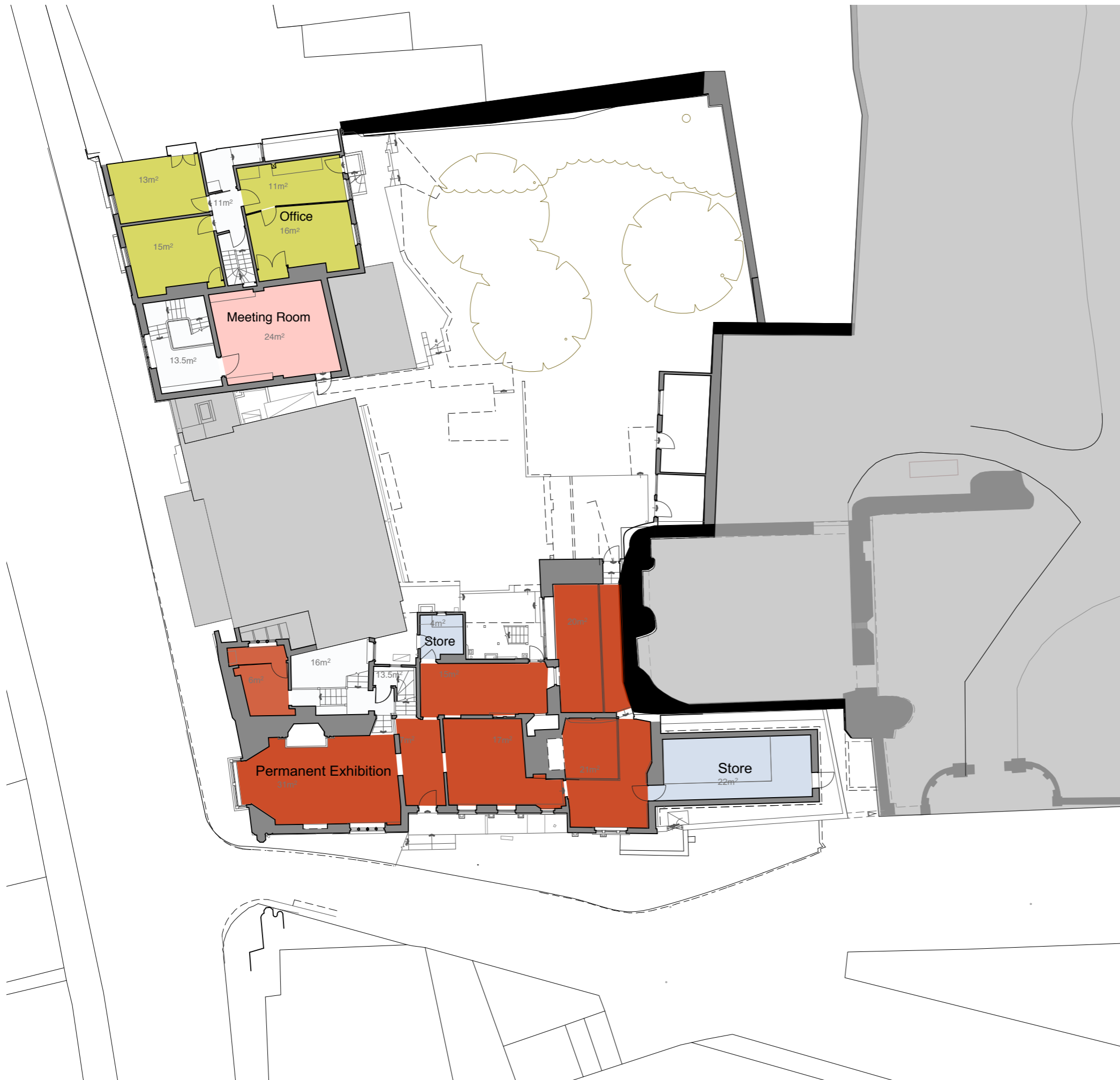
Revisions  
 Revision C: 03.12.18 consultant team  
 Revision B: 03.10.18 Q.S.  
 Revision A: 20.11.14 JD terminology correction  
 Revision X: 10.04.13

Note 1  
 •Do not scale from this drawing  
 •Use figured dimensions only  
 •Dimensions shown in millimetres  
 •All dimensions given to finished surfaces  
 •Not to be used as fabrication drawings  
 •Allow for minimum working tolerances  
 •Verify all dimensions on site  
 •Inform Architect of any discrepancies  
 •Refer to Specification/Finishes Schedule  
 •Allow for all making good consequent upon the works

### For Information

No. GMC/SU/05 Rev C  
 Scale 1:200 @ A3  
 Date 01/13  
 Project Guildford Museum and Castle  
 Title Existing level B

**ZMMA**  
 25b Underwood Street  
 London N1 7LG  
 T +44 (0)20 7251 8888  
 F +44 (0)20 7251 8080  
 E info@zmma.com



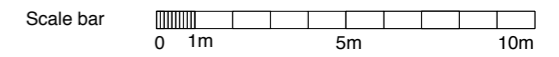
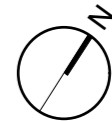
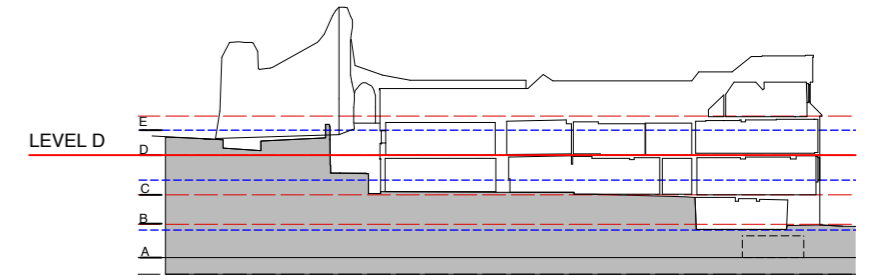
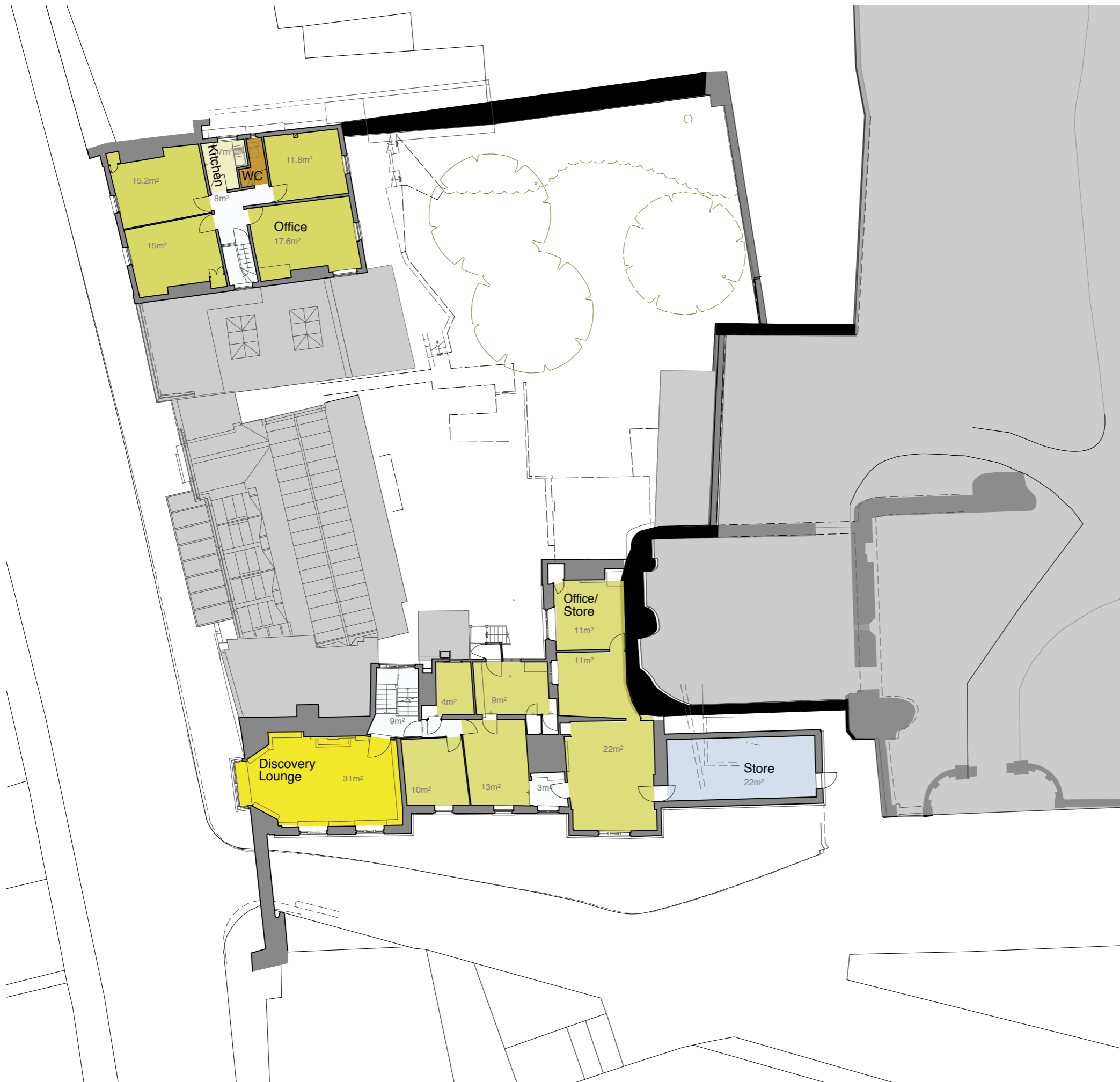
Revisions  
 Revision D: 26.3.19 stage 2  
 Revision B: 03.12.18 consultant team  
 Revision A: 03.10.18 Q.S.  
 Revision X10.04.13

- Note 1
- Do not scale from this drawing
  - Use figured dimensions only
  - Dimensions shown in millimetres
  - All dimensions given to finished surfaces
  - Not to be used as fabrication drawings
  - Allow for minimum working tolerances
  - Verify all dimensions on site
  - Inform Architect of any discrepancies
  - Refer to Specification/Finishes Schedule
  - Allow for all making good consequent upon the works

### For Information

No. GMC/SU/04 Rev C  
 Scale 1:200 @ A3  
 Date 01/13  
 Project Guildford Museum and Castle  
 Title Existing Level C

**ZMMA**  
 25b Underwood Street  
 London N1 7LG  
 T +44 (0)20 7251 8888  
 F +44 (0)20 7251 8080  
 E info@zmma.com



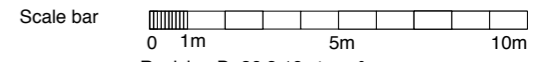
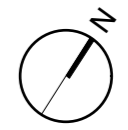
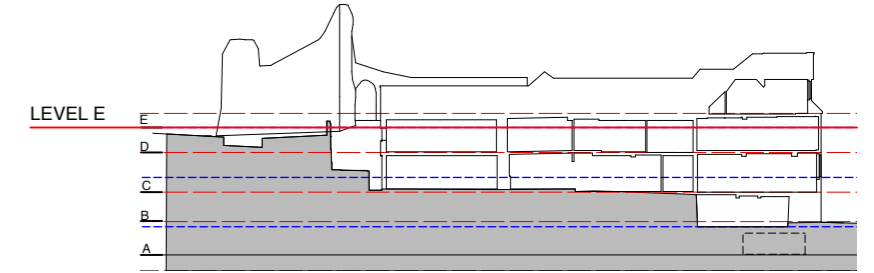
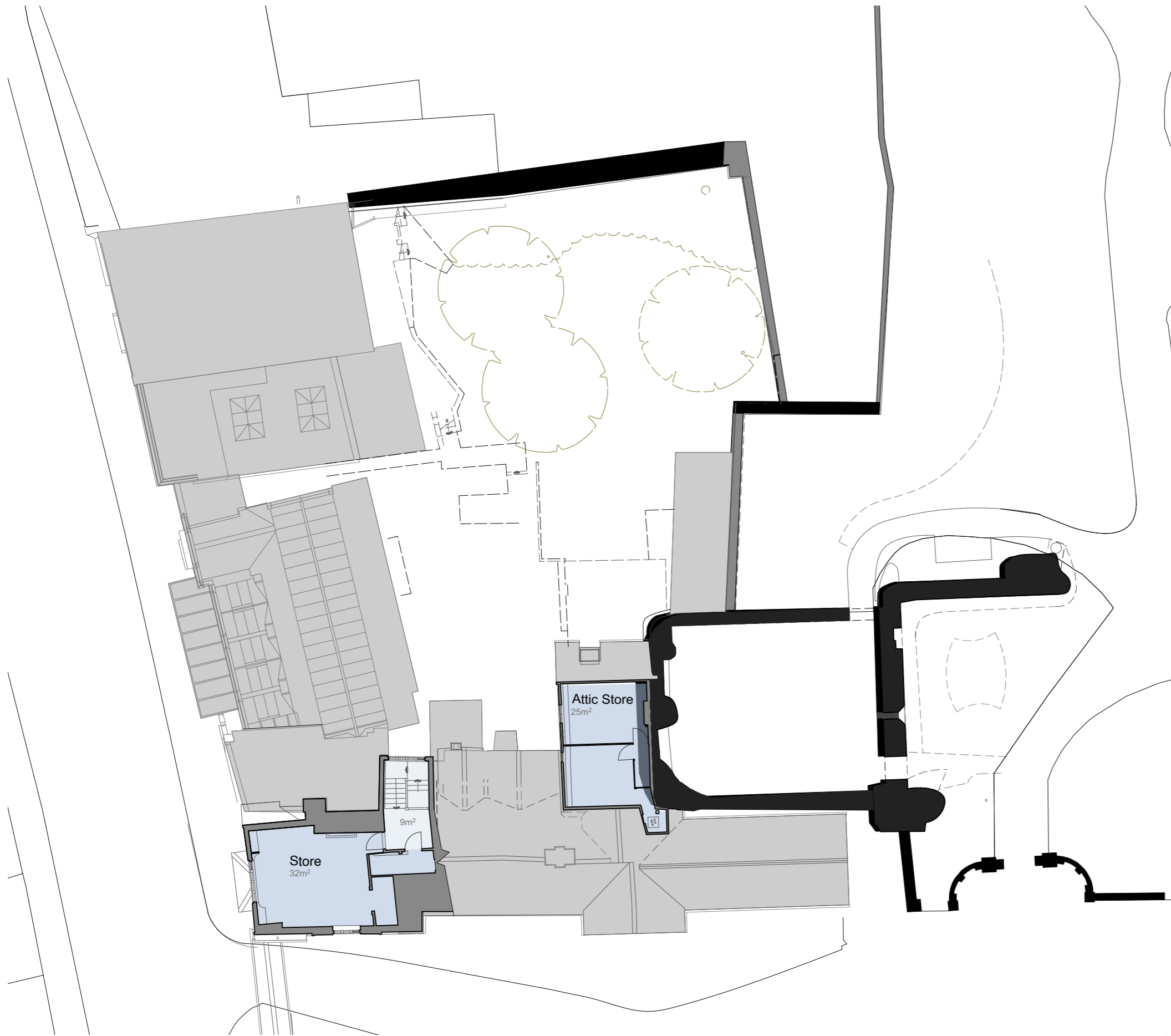
Revisions  
 Revision D: 26.3.19 stage 2  
 Revision C: 03.12.18 consultant team  
 Revision B: 03.10.18 Q.S.  
 Revision A: 20.11.14  
 Revision X: 10.04.13

Note 1  
 •Do not scale from this drawing  
 •Use figured dimensions only  
 •Dimensions shown in millimetres  
 •All dimensions given to finished surfaces  
 •Not to be used as fabrication drawings  
 •Allow for minimum working tolerances  
 •Verify all dimensions on site  
 •Inform Architect of any discrepancies  
 •Refer to Specification/Finishes Schedule  
 •Allow for all making good consequent upon the works

## For Information

No. GMC/SU/03 Rev D  
 Scale 1:200 @ A3  
 Date 01/13  
 Project Guildford Museum and Castle  
 Title Existing Level D

**ZMMA**  
 25b Underwood Street  
 London N1 7LG  
 T +44 (0)20 7251 8888  
 F +44 (0)20 7251 8080  
 E info@zmma.com



Revisions  
 Revision D: 26.3.19 stage 2  
 Revision C: 03.12.18 consultant team  
 Revision B: 03.10.18 Q.S.  
 Revision A: 21.11.14 JD  
 Revision X: 10.04.13

Note 1  
 •Do not scale from this drawing  
 •Use figured dimensions only  
 •Dimensions shown in millimetres  
 •All dimensions given to finished surfaces  
 •Not to be used as fabrication drawings  
 •Allow for minimum working tolerances  
 •Verify all dimensions on site  
 •Inform Architect of any discrepancies  
 •Refer to Specification/Finishes Schedule  
 •Allow for all making good consequent upon the works

### For Information

No. GMC/SU/02 Rev D  
 Scale 1:200 @ A3  
 Date 01/13  
 Project Guildford Museum and Castle  
 Title Existing level E

**ZMMA**  
 25b Underwood Street  
 London N1 7LG  
 T +44 (0)20 7251 8888  
 F +44 (0)20 7251 8080  
 E info@zmma.com



# Proposed Plans

## **GMC/SK/29 Rev D**

Level A

## **GMC/SK/30 Rev H**

Level B Quarry Street Level  
Plan

## **GMC/SK/31 Rev K**

Middle & Level C Plan

## **GMC/SK/32 Rev H**

Level D Plan

## **GMC/SK/33 Rev K**

Castle Gardens & Level E  
Plan Option I

## **GMC/SK/34 Rev D**

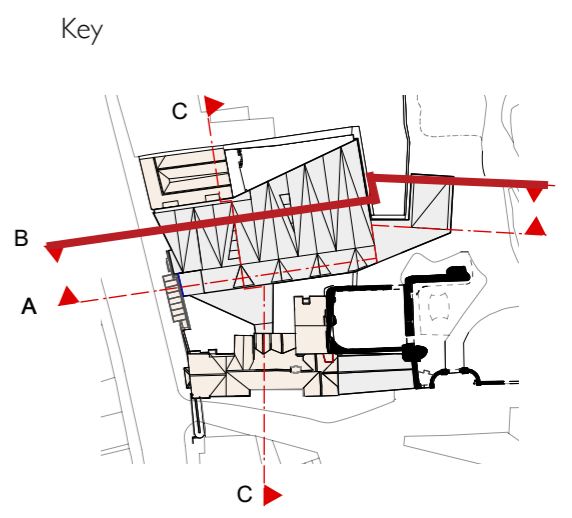
Roof Level Plan Option I



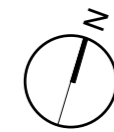
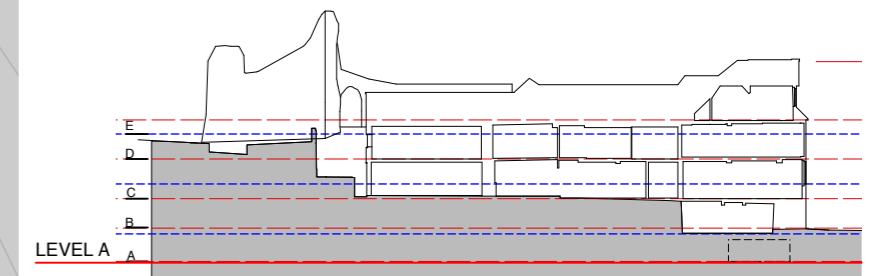
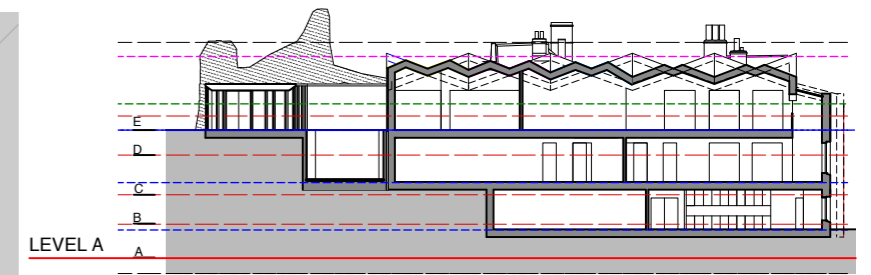
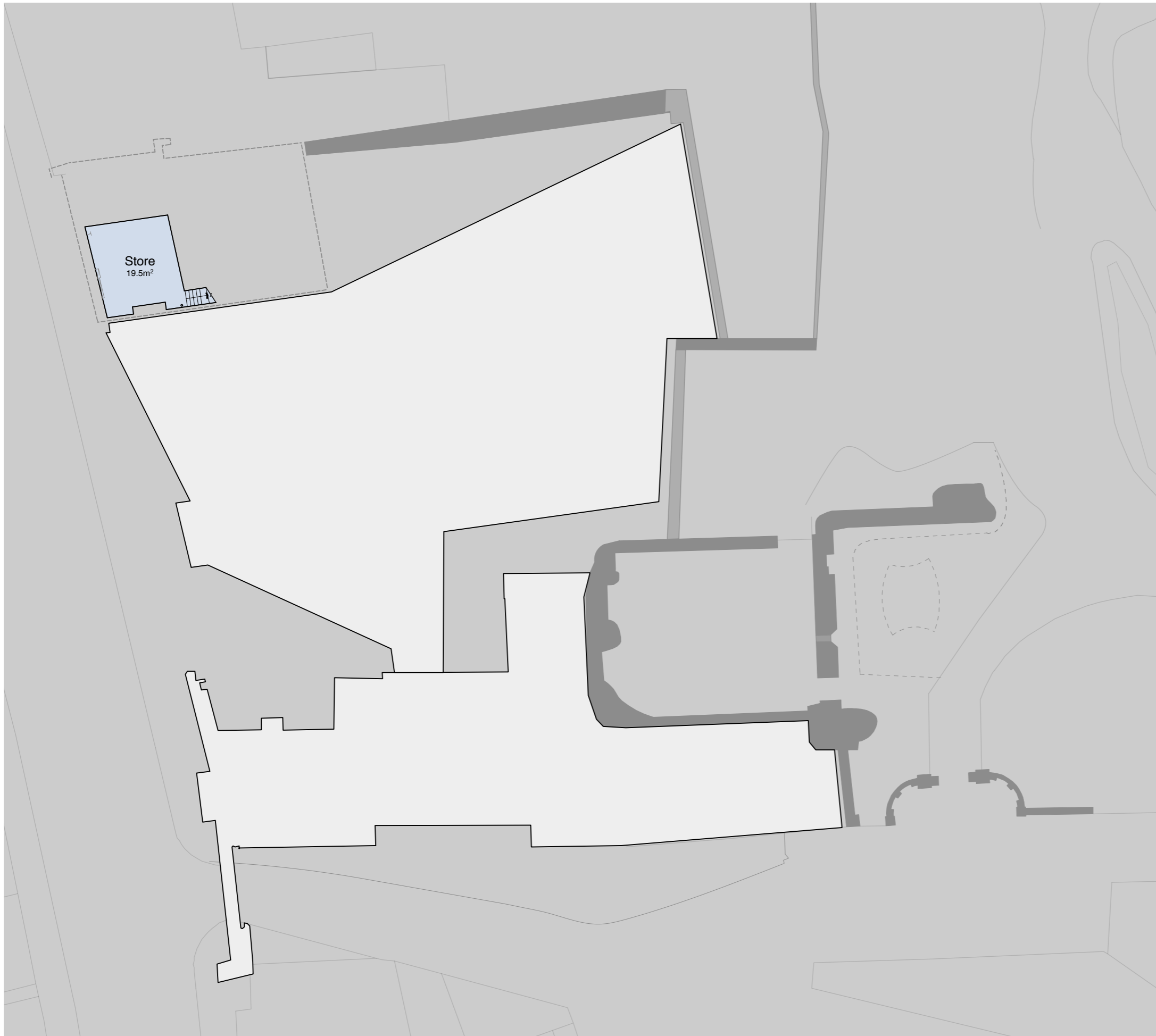
- 1. Courtyard Building**
- 2. 48 Quarry Street**
- 3. Castle Arch**
- 4. New Strong room**
- 5. New Chamber**
- 6. King's Chamber**
- 7. Castle Grounds**
- 8. Guildford Castle**
- Guildford Museum**

Proposed Site Plan, scale: 1:500





Section A through new Museum Courtyard Building



Revisions

- Revision D: 26.3.19 Stage 2.1
- Revision C: 28.2.18 GBC, JH, Dropbox
- Revision B: 11.02.19 Client
- Revision A: 08.02.19 Client
- First issued: 04.1.18 Q.S.

Note 1

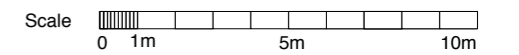
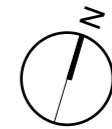
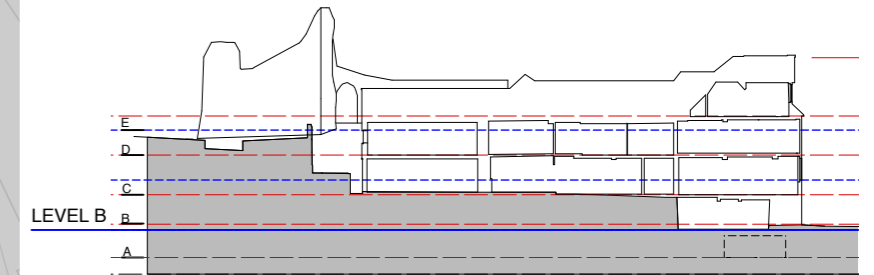
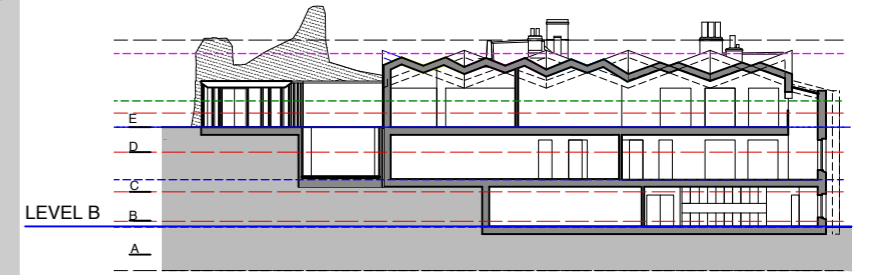
- Do not scale from this drawing
- Use figured dimensions only
- Dimensions shown in millimetres
- All dimensions given to finished surfaces
- Not to be used as fabrication drawings
- Allow for minimum working tolerances
- Verify all dimensions on site
- Inform Architect of any discrepancies
- Refer to Specification/Finishes Schedule
- Allow for all making good consequent upon the works

## For Information

No. **GMC/SK/29** Rev D  
 Scale 1:200 @ A3  
 Date 09/17  
 Project Guildford Museum and Castle  
 Title Level A

**ZMMA**

25b Underwood Street  
 London N1 7LG  
 T +44 (0)20 7251 8888  
 F +44 (0)20 7251 8080  
 E info@zmma.com



- Revisions
- Revision H: 26.3.19 Stage 2.1
  - Revision G: 28.2.18 GBC, JH, Dropbox
  - Revision F: 11.02.19 Client
  - Revision E: 08.02.19 Client
  - Revision D: 03.12.18 Consultant team
  - Revision C: 3.10.18 Q.S.
  - Revision B: 15.12.17
  - Revision A: 12.10.17
  - First issued: 20.09.17

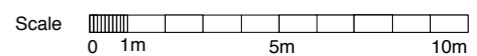
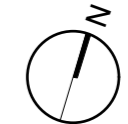
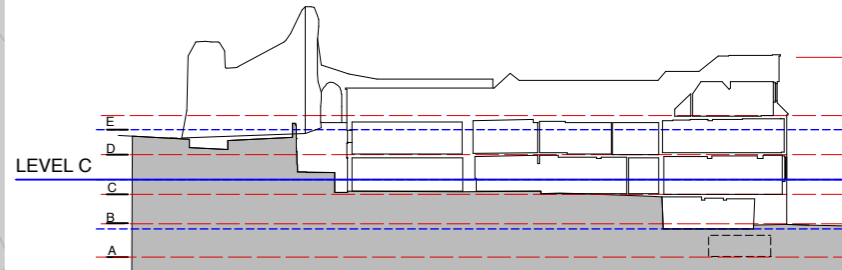
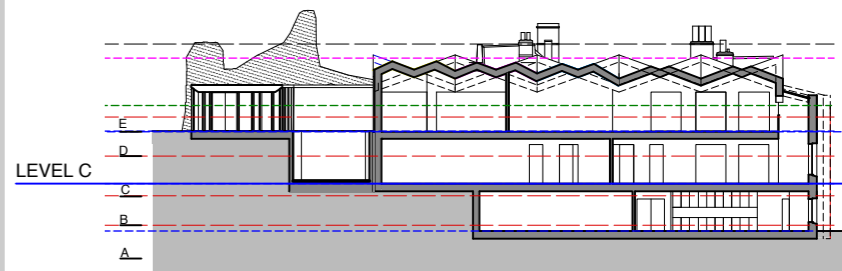
- Note 1
- Do not scale from this drawing
  - Use figured dimensions only
  - Dimensions shown in millimetres
  - All dimensions given to finished surfaces
  - Not to be used as fabrication drawings
  - Allow for minimum working tolerances
  - Verify all dimensions on site
  - Inform Architect of any discrepancies
  - Refer to Specification/Finishes Schedule
  - Allow for all making good consequent upon the works

## For Information

No. GMC/SK/30 Rev H  
 Scale 1:200 @ A3  
 Date 09/17  
 Project Guildford Museum and Castle  
 Title Level B  
 Quarry Street Level Plan



25b Underwood Street  
 London N1 7LG  
 T +44 (0)20 7251 8888  
 F +44 (0)20 7251 8080  
 E info@zmma.com



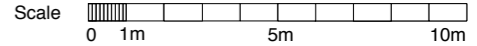
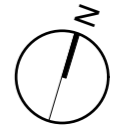
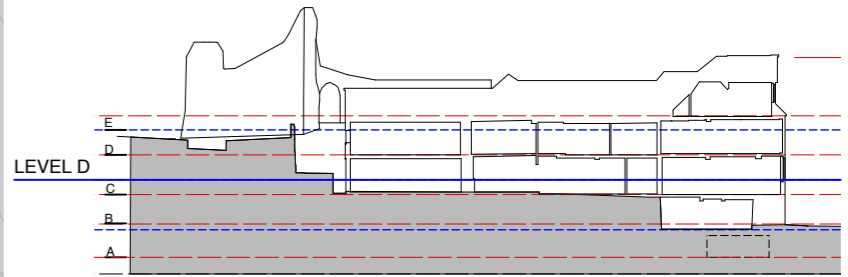
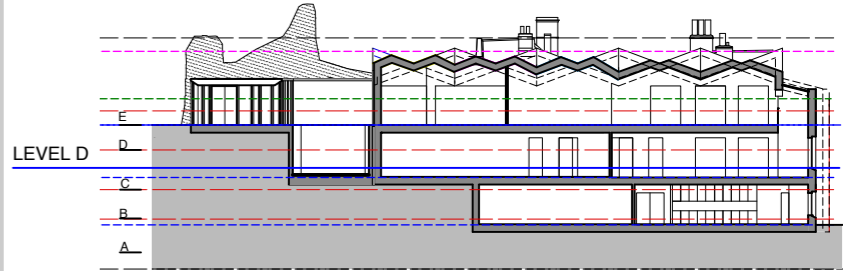
- Revisions
- Revision K: 26.3.19 Stage 2.1
  - Revision J: 28.2.18 GBC, JH, Dropbox
  - Revision I: 25.02.19 QS
  - Revision H: 12.02.19 Client / JH
  - Revision G: 11.02.19 Client
  - Revision F: 08.02.19 Client
  - Revision E: 03.12.18 Consultant team
  - Revision D: 3.10.18 Q.S.
  - Revision C: 15.12.17
  - Revision B: 12.12.17
  - Revision A: 12.10.17
  - First issued: 20.09.17

- Note 1
- Do not scale from this drawing
  - Use figured dimensions only
  - Dimensions shown in millimetres
  - All dimensions given to finished surfaces
  - Not to be used as fabrication drawings
  - Allow for minimum working tolerances
  - Verify all dimensions on site
  - Inform Architect of any discrepancies
  - Refer to Specification/Finishes Schedule
  - Allow for all making good consequent upon the works

## For Information

No. GMC/SK/31 Rev K  
 Scale 1:200 @ A3  
 Date 09/17  
 Project Guildford Museum and Castle  
 Title Middle & Level C Plan

**ZMMA**  
 25b Underwood Street  
 London N1 7LG  
 T +44 (0)20 7251 8888  
 F +44 (0)20 7251 8080  
 E info@zmma.com



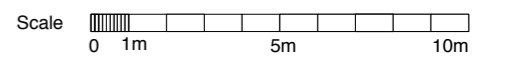
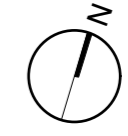
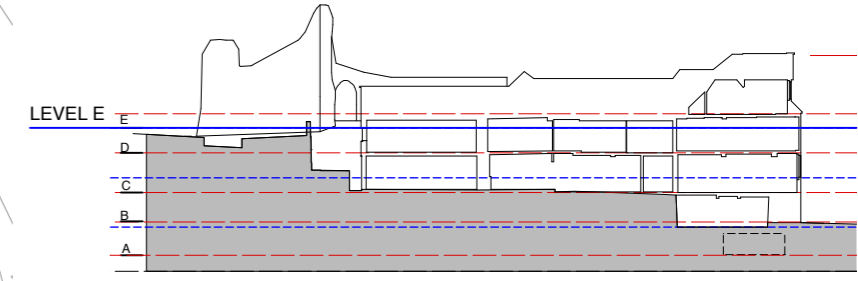
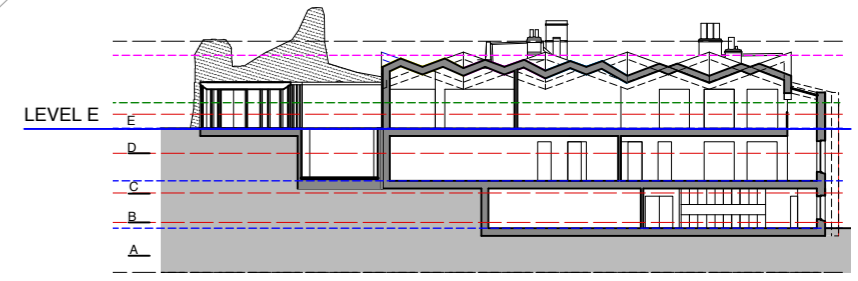
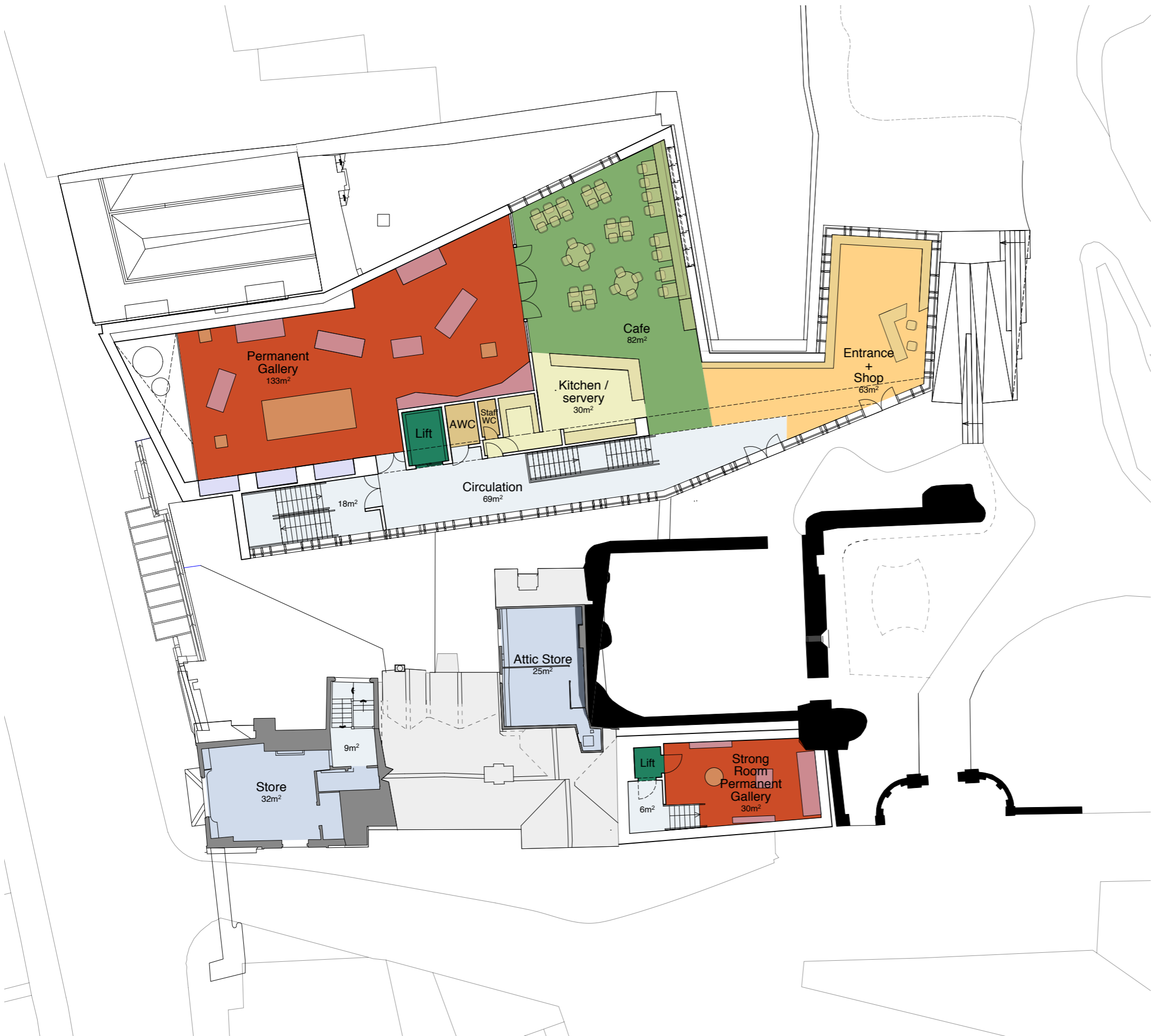
- Revisions
- Revision H: 26.3.19 Stage 2.1
  - Revision G: 28.2.18 GBC, JH, Dropbox
  - Revision F: 08.02.19 Client
  - Revision E: 08.02.19 Client
  - Revision D: 03.12.18 Consultant team
  - Revision C: 3.10.18 Q.S.
  - Revision B: 15.12.17
  - Revision A: 12.12.17
  - First issued: 20.09.17

- Note 1
- Do not scale from this drawing
  - Use figured dimensions only
  - Dimensions shown in millimetres
  - All dimensions given to finished surfaces
  - Not to be used as fabrication drawings
  - Allow for minimum working tolerances
  - Verify all dimensions on site
  - Inform Architect of any discrepancies
  - Refer to Specification/Finishes Schedule
  - Allow for all making good consequent upon the works

### For Information

No. GMC/SK/32 Rev H  
 Scale 1:200 @ A3  
 Date 09/17  
 Project Guildford Museum and Castle  
 Title Level D Plan

**ZMMA**  
 25b Underwood Street  
 London N1 7LG  
 T +44 (0)20 7251 8888  
 F +44 (0)20 7251 8080  
 E info@zmma.com



- Revisions
- Revision K: 26.3.19 Stage 2.1
  - Revision J: 28.2.18 GBC, JH, Dropbox
  - Revision I: 25.02.19 Client / JH
  - Revision H: 12.02.19 Client / JH
  - Revision G: 11.02.19 Client
  - Revision F: 08.02.19 Client
  - Revision E: 03.12.18 Consultant team
  - Revision D: 3.10.18 Q.S.
  - Revision C: 15.12.17
  - Revision B: 12.12.17
  - Revision A: 12.10.17
  - First issued: 20.09.17

- Note 1
- Do not scale from this drawing
  - Use figured dimensions only
  - Dimensions shown in millimetres
  - All dimensions given to finished surfaces
  - Not to be used as fabrication drawings
  - Allow for minimum working tolerances
  - Verify all dimensions on site
  - Inform Architect of any discrepancies
  - Refer to Specification/Finishes Schedule
  - Allow for all making good consequent upon the works

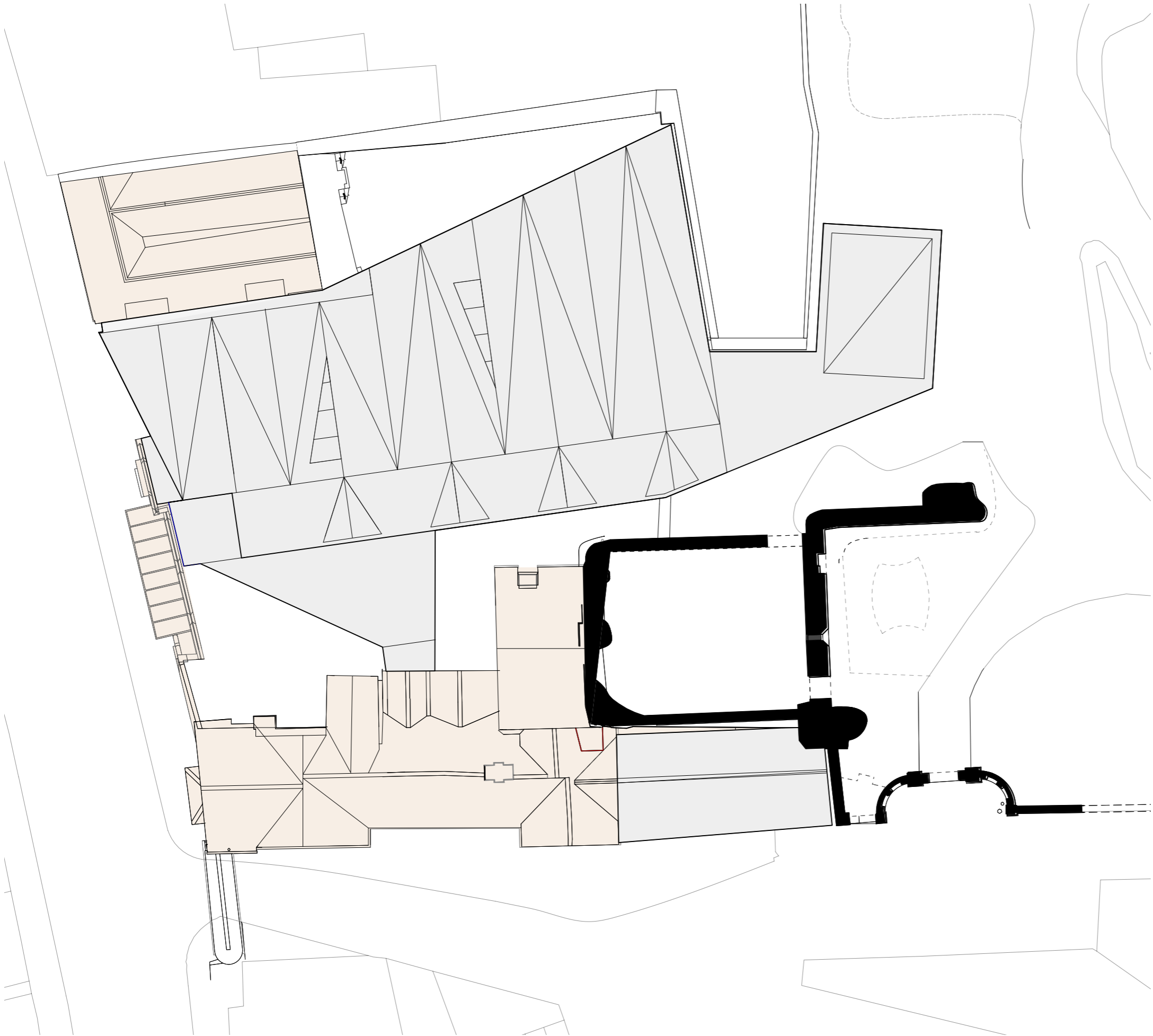
## For Information

No. **GMC/SK/33 Rev K**  
 Scale 1:200 @ A3  
 Date 09/17  
 Project Guildford Museum and Castle  
 Title Castle Gardens & Level E Plan Option 1

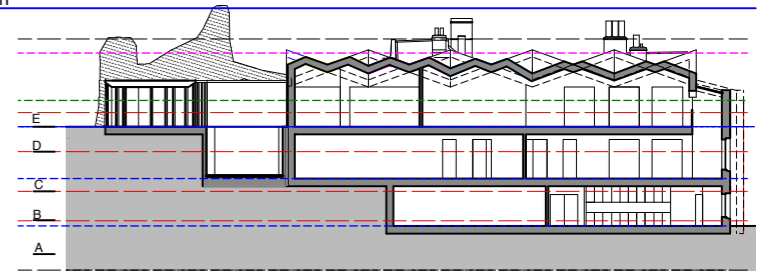


25b Underwood Street  
 London N1 7LG  
 T +44 (0)20 7251 8888  
 F +44 (0)20 7251 8080  
 E info@zmma.com  
 E info@zmma.com

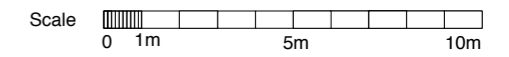
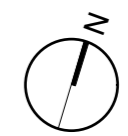
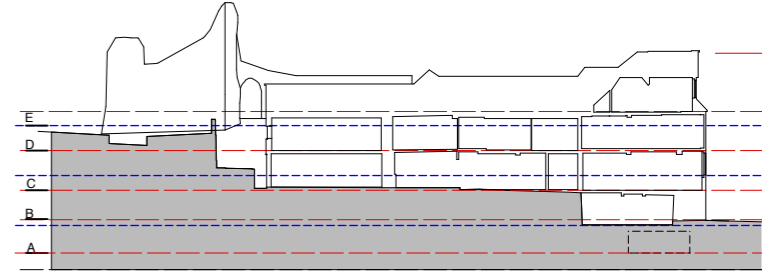




Roof plan



Roof plan



Revisions  
 Revision D: 26.3.19 Stage 2.1  
 Revision C: 28.2.18 GBC, JH, Dropbox  
 Revision B: 26.02.19 QS  
 Revision A: 11.02.19 Client  
 First Issue: 08.02.19 Client

Note 1  
 •Do not scale from this drawing  
 •Use figured dimensions only  
 •Dimensions shown in millimetres  
 •All dimensions given to finished surfaces  
 •Not to be used as fabrication drawings  
 •Allow for minimum working tolerances  
 •Verify all dimensions on site  
 •Inform Architect of any discrepancies  
 •Refer to Specification/Finishes Schedule  
 •Allow for all making good consequent upon the works

**For Information**

No. GMC/SK/34 Rev D  
 Scale 1:200 @ A3  
 Date 09/17  
 Project Guildford Museum and Castle  
 Title Roof Level Plan Option 1

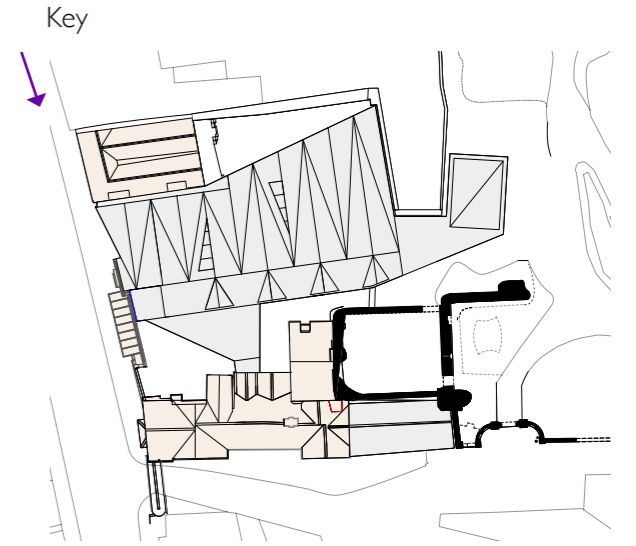


25b Underwood Street  
 London N1 7LG  
 T +44 (0)20 7251 8888  
 F +44 (0)20 7251 8080  
 E info@zmma.com

48 Quarry Street

Museum Courtyard  
Building

Castle Arch



View looking south along Quarry Street



Section C through new Museum.

Key

